



**TEQBALL TOUR**

**GRINDSTED**

**June  
21-23**

Tinghusgade 15,  
7200 Grindsted,  
Denmark



# Event Guide

**PLAYERS:** 84

**NATIONS:** 18

**WORLD RANKING CATEGORY:**  
Event Category III



**FITEQ®**  
International Teqball  
Federation

**TEQBALL**  
WORLD & COUNTRIES

## WELCOME MESSAGE

On behalf of the International Teqball Federation (FITEQ), we offer our warmest welcome to all the athletes, coaches and technical officials, as well as delegates participating in the Teqball Tour - Grindsted. The upcoming Teqball Tour event will feature the world's leading men's singles, women's singles, women's doubles; men's doubles, and mixed doubles players in a milestone event for FITEQ.

This event will provide athletes with opportunities to win prize money and to obtain world ranking points as well, whilst giving fans all over the world a unique sporting experience.

We believe that the Teqball Tour - Grindsted event will be memorable and exciting for both the participants and the wider sporting community, as well as for the spectators. FITEQ would like to take this opportunity to express its appreciation and to thank the Danish partners for jointly organizing this event and for their support. We wish you all a fantastic competition!



**Viktor Huszár**  
Chairman  
FITEQ



**György Gattyán**  
Vice-President  
FITEQ



**Gábor Borsányi**  
President  
FITEQ



## AGENDA

## I. ORGANISER AND KEY CONTACTS

### COMPETITION MANAGEMENT

International Teqball Federation (FITEQ)  
5-7. Expo Square, Budapest, Hungary 1101

✉ [competition@fiteq.org](mailto:competition@fiteq.org)

### EVENT TEAM LEADER

**Barbara PÁLFI**

✉ [barbara.palfi@teqball.com](mailto:barbara.palfi@teqball.com)

### COMPETITION MANAGER

**Adam MAROSVARI**

✉ [adam.marosvari@fiteq.org](mailto:adam.marosvari@fiteq.org)

### CHIEF REFEREE

**Barnabas NEMETH**

✉ [barnabas.nemeth@fiteq.org](mailto:barnabas.nemeth@fiteq.org)

## II. COMPETITION INFORMATION

### EVENTS

- Men's Singles
- Women's Singles
- Men's Doubles
- Women's Doubles
- Mixed Doubles

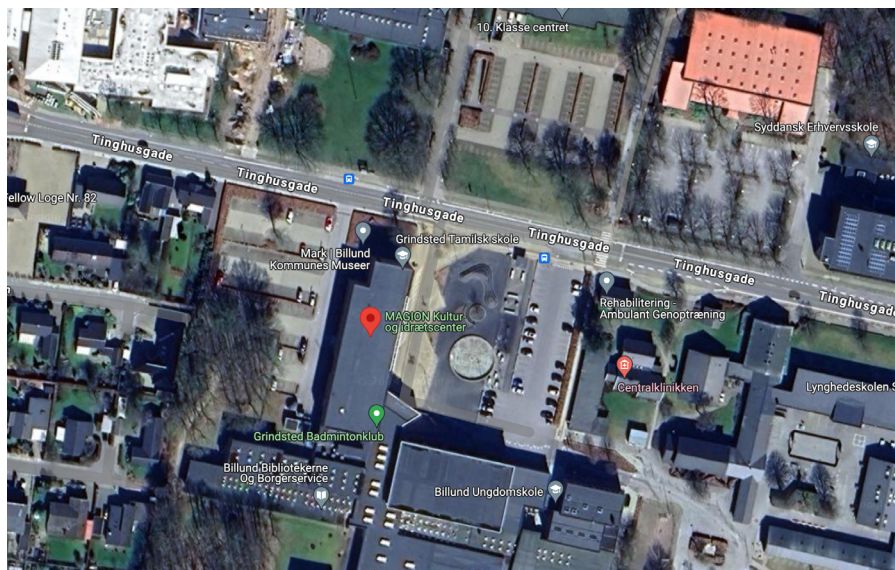
### COMPETITION VENUE (INDOOR)

Tinghusgade 15, 7200 Grindsted, Grindsted, Denmark

### PRACTICE OPPORTUNITY:

20th of June

13:00-18:00 Training time (NO FOP)



## TOURNAMENT SCHEDULE

### 20TH OF JUNE

13:00-18:00

TRAINING TIME - (NO FOP)

16:00-18:00

ACCREDITATION TIME

### 21ST OF JUNE

8:30-9:30

ACCREDITATION TIME

13:00-13:30

ACCREDITATION TIME

9:00-15:05

MEN'S SINGLES MATCHES

15:30-18:10

MIXED DOUBLES KNOCKOUT STAGE

### 22ND OF JUNE

8:45-9:30

ACCREDITATION TIME

10:00-12:20

MEN'S DOUBLES MATCHES

12:20-13:50

WOMEN'S DOUBLES MATCHES

14:50-21:10

KO MATCHES

### 23RD OF JUNE

12:00-15:20

FINALS



## TOURNAMENT SYSTEM

The tournament will consist of a group stage and a knockout stage in all categories.

### GROUP STAGE

- Best of 3 set games - the first team to reach 12 points, only the decisive set must be won by 2 clear points difference.

### KNOCKOUT STAGE

- Best of 3 sets games, only the decisive set must be won by 2 clear points difference.
- Bronze game will be played by the losers of the semi-finals.
- Final will be played by the winners of the semi-finals.

### QUALIFICATION RULES

In case of the same results between the teams the following guidelines and rules shall be applied to decide which team finishes higher:

- Direct result (in case of 2 teams);
- Results against each other with better set difference (in case of 3 or more teams);
- Results against each other with better point difference (in case of 3 or more teams);
- Results against the other teams of the group (sets, points);
- In case every result is the same, a coin toss will be made, and the winner finishes higher.

## COMPETITION FORMAT

### Men's Singles:

40 players have been nominated in the Men's Singles category. The 40 players have been drawn into 12 groups of 3 with 4 seeded players..The winners from each group proceeds to the Knock Out Stage (KO16). Seeded players start in the KO16.

### Women's Singles:

20 players have been nominated in the Women's Singles category. The 20 players have been drawn into 6 groups of 3 with 2 seeded players..The winners from each group proceeds to the Knock Out Stage (KO8). Seeded players start in the KO8.

### Women's Doubles:

9 teams have been registered in the Women's Doubles category. The teams have been drawn into 1 group of 5 and 1 group of 4. The top 2 teams from each group proceeds to the Knock Out Stage (Semi-Final).

### Men's Doubles:

22 teams have been registered in the Men's Doubles category. The teams have been drawn into 6 groups of 3 with 4 seeded teams. The top 2 teams from each group

proceeds to the Knock Out Stage (KO16).Seeded teams start in the KO16.

### Mixed Doubles:

18 teams have been registered in the Mixed Doubles category. The teams have been drawn into 6 groups of 3. The winners from each group proceeds to the Knock Out Stage (KO8). The winners of group A and group B will get a bye in the KO8.

The June World Ranking will be considered for the draw.

Draw: 14th of June 11:00 CET

## ADDITIONAL RULES

- Warm-up time before the game: 1 MINUTE.
- Time out: ONCE every game. The teams/players do not change side after time-out but remain on their own half as before the Time-out.
- Break between the sets: 1 MINUTE. By entering the event, players agree to abide by The FITEQ Rules and Regulation of Teqball (can be found at [www.fiteq.org](http://www.fiteq.org)).
- Call room/area: every athlete must be present there 10 minutes prior to their match otherwise they will receive a warning. After 3 warnings a walkover will be the penalty.

## WARNING SYSTEM

During the competition, referees will use cards to demonstrate disciplinary actions, to ensure visibility and understanding of the procedures. Disciplinary actions remain the same according to the rulebook:

- Unsporting conduct occurs when a player makes any inappropriate verbal remark or non-verbal gesture to the opponent players, team officials, referees, spectators, or any other stakeholders who are part of the match/tournament.
- If the Main Referee considers the player's conduct to be unsporting, they may sanction the player according to the following three steps:
  - Verbal warning – for unsporting behaviour, the Main Referee must issue a verbal warning to the offending player or team official, without awarding a point, unless the opposing player/team is clearly going to win the point. If the opposing player/ team wins the point after unsporting conduct, the point must be awarded, and a verbal warning must be issued afterwards. The Main Referee may use their own words to explain the type of unsporting behaviour and then must warn the player/ er that for the next similar action, a point will be awarded to the opponent player/ team.

### - WARNING CARD

- Point awarded to the opponent player/team – in teqball, referees do not use coloured cards. Where an unsporting behaviour takes place for a second time by the player/ team or team official, the Main Referee must award a point to the opponent player/ team and call out: "Second warning! Point to the opponent!" This step may be used several times if a player continues with unsporting behaviour.

#### – POINT TO THE OPPONENT CARD

- Dismissal – in the case of an extreme offence or continuous unsporting behaviour, the Main Referee may dismiss a player by reporting them to the Competition Manager and/or the Chief Referee. The dismissal must be made by either the Competition Manager or the Chief Referee. After the dismissal, the opposing player/team wins the match, but all previously earned points by the dismissed player remain valid.
- A warning or penalty incurred by any member of a team shall apply to the whole team.



#### WORLD RANKING

World Ranking points will be awarded as per Category III event with the bonus points system implemented as per the FITEQ World Ranking Policy.

#### ACCREDITATION /REGISTRATION

Athletes and delegations will receive an official accreditation pass to the Teqball Tour - venues, and competition areas. Players can request an accreditation pass only within the designated accreditation periods. The accreditation must be worn at all times and the holder of the accreditation can be asked to prove their identity during the competition at any time.

Every athlete must present a valid ID card/passport and must submit the jersey/shorts as well for approval to the competition@fiteq.org no later than 2 weeks before the competition starting time.

Please be aware that without an accreditation pass, participation in the event will not be possible. Players can obtain their accreditation passes during the designated accreditation period. In the event of losing your accreditation pass, you may request a replacement from the competition manager for a fee of 100 USD. However, if you lose your second pass, you will no longer be eligible to compete in the event.

Every athlete must present a valid ID card/passport and must submit the jerseys/shorts as well for approval.

#### Practice opportunity – warm-up area

Warm-up area will be available during the whole competition where athletes can practice on four tables. Please only use the warm-up facilities 60 minutes prior to your match in order to allow everyone to have enough time and space to practice.

#### Prize Money Allocation

According to FITEQ's policy, 100% of the prize money won is allocated to the players.

RANKING	MEN'S SINGLES	WOMEN'S SINGLES	MEN'S DOUBLES	WOMEN'S DOUBLES	MIXED DOUBLES
1	650	650	1300	1300	1300
2	450	450	900	900	900
3	300	300	600	600	600
3	300	300	600	600	600
5-8	200	200	400	400	400

#### Uniforms and accessories

All players and teams must provide their own sports clothing.

All players and teams must have a minimum of two (2) sets of shirts/jerseys, each of a different shade. Non-compliance, failure to bring both jerseys, may result in fines ranging from 100 to 500 USD imposed by FITEQ. Prior to each game, teams shall agree on their uniform. 'Home' team chooses first which jersey to wear.

If no agreement is reached there will be a coin toss by the referee, after which the winning team shall choose their preferred colour. Team members must wear matching playing uniforms i.e. both players must wear the same type and colour shorts and jerseys as one another.

Headbands, sweatbands and religious headwear are permitted. Sunglasses and hats not permitted.

Teams on the field may not display sponsors that feature logos from other sports or conflict with FITEQ's interests, as well as tobacco and alcohol products.

All uniforms must be in line with the Equipment Regulations.



### III. ADDITIONAL INFORMATION

#### Catering

Please kindly note that catering is NOT provided during the event, so please prepare accordingly, however water and snacks will be provided by FITEQ.

#### Medical room

FITEQ will provide a physiotherapist available for free of charge at the competition venue during competition hours. Medical team will be also provided by FITEQ during the competition.

## COACH CODE

#### 1. Introduction:

The Teqball Tour aims to maintain the highest standards of professionalism, sportsmanship, and fair play. Coaches, being pivotal contributors to the event, are required to adhere to a comprehensive code of conduct and accreditation policy to ensure the smooth and respectful conduct of matches and contribute to the positive atmosphere of the championship.

#### 2. Coach Accreditation:

Coach Accreditation can only be obtained during designated accreditation hours. Specific details can be found in the Event guide on [fiteq.org](http://fiteq.org).

Only coaches with valid Coach Accreditation are permitted next to the Field of Play (FoP) during their team's matches, in accordance with their registration.

No person is allowed to enter the coaching box after the Coin Toss procedure of a match.

#### 3. Adherence to Rules and Regulations:

Coaches are expected to strictly adhere to The Official Rules and Regulations of Teqball.

Coaches must remain within the designated coaching box/coaching zone throughout the match, including breaks between sets, warm-up, or time-outs. Re-entry to the coaching box is not permitted once a coach leaves.

Coaches must refrain from talking or providing instructions to their athlete/team during rallies.

#### 4. Sportsmanship and Celebration:

Coaches are encouraged to celebrate and motivate their teams in a manner that upholds the spirit of fair play (Spirit of the Game).

Coaches must embody the values of teqball and consistently demonstrate respect towards officials, other players, and spectators.

#### 5. Clothing and Equipment Regulations:

Coaches must adhere to the clothing and equipment regulations outlined below.

##### 5.1 National Clothing:

- Coaches are strongly encouraged to wear official team uniforms.
- Official team uniforms should be worn during official matches, team meetings, and any other championship-related events.

# OFFICIAL SCHEDULE

## 5.2 Neat and Professional Appearance:

- Coaches must maintain a neat and professional appearance at all times.
- Clothing should be clean, free of wrinkles, and in good condition.

## 5.3 Footwear:

- Sneakers or sports shoes are mandatory to wear during the competition.

## 5.4 Logos and Sponsorship:

- Coaches are allowed to wear clothing with small and discrete logos representing team sponsors.
- The display of commercial logos, political symbols, or any offensive content is strictly prohibited.

## 5.5 Attire Recommendations:

- During the qualifiers stages, coaches are advised to wear official team uniforms.
- For the broadcasted matches, coaches are recommended to wear business casual attire or official team uniforms.

## 6. Post-Match Responsibilities:

After matches, coaches are responsible for ensuring that the coaching box is kept clean and free from any litter, such as bottles, towels, or snack packaging.

## 7. Electronic Devices and Communication:

The use of electronic devices or communication tools by coaches during matches is strictly prohibited unless explicitly permitted by the event organizers for specific purposes.

Coaches must refrain from talking or providing instructions to their athlete/team during rallies.

## 8. Enforcement and Penalties:

Violation of any of the above guidelines may result in penalties, including fines, suspension, or other measures deemed necessary by the Competition Team.

## 9. Conclusion:

This policy is designed to ensure the integrity and smooth operation of the Teqball Tour. Coaches are expected to familiarize themselves with and abide by these guidelines for the duration of the event.

This policy is subject to change at the discretion of FITEQ. Any updates will be communicated promptly to all participating teams and coaches.

Day 1 - Indoor - 21 June - Teqball Tour - Grindsted 2024							
Start	End	Table 1	Table 2	Table 3	Table 4	Table 5	Table 6
10:00	10:30	Men's Singles Qual	Men's Singles Qual	Men's Singles Qual	Men's Singles Qual	Men's Singles Qual	Men's Singles Qual
10:30	11:00	Men's Singles Qual	Men's Singles Qual	Men's Singles Qual	Men's Singles Qual	Men's Singles Qual	Men's Singles Qual
11:00	11:30	Men's Singles Qual	Men's Singles Qual	Men's Singles Qual	Men's Singles Qual	Men's Singles Qual	Men's Singles Qual
11:30	12:00	Men's Singles Qual	Men's Singles Qual	Men's Singles Qual	Men's Singles Qual	Men's Singles Qual	Men's Singles Qual
12:00	12:30	Men's Singles Qual	Men's Singles Qual	Men's Singles Qual	Men's Singles Qual	Men's Singles Qual	Men's Singles Qual
12:30	13:00	Men's Singles Qual	Men's Singles Qual	Men's Singles Qual	Men's Singles Qual	Men's Singles Qual	Men's Singles Qual
13:00	14:00	LUNCH BREAK + MS DRAW					
14:00	14:35	Men's Singles KO 16	Men's Singles KO 16	Men's Singles KO 16	Men's Singles KO 16		
14:35	15:05	Men's Singles KO 16	Men's Singles KO 16	Men's Singles KO 16	Men's Singles KO 16		
15:05	15:35	Women's Singles Qual	Women's Singles Qual	Women's Singles Qual	Women's Singles Qual	Women's Singles Qual	Women's Singles Qual
15:35	16:05	Women's Singles Qual	Women's Singles Qual	Women's Singles Qual	Women's Singles Qual	Women's Singles Qual	Women's Singles Qual
16:05	16:35	Women's Singles Qual	Women's Singles Qual	Women's Singles Qual	Women's Singles Qual	Women's Singles Qual	Women's Singles Qual
16:35	17:05	BUFFER BREAK					
17:05	17:35	Mixed Doubles Qual	Mixed Doubles Qual	Mixed Doubles Qual	Mixed Doubles Qual	Mixed Doubles Qual	Mixed Doubles Qual
17:35	17:45	BUFFER BREAK					
17:45	18:15	Mixed Doubles Qual	Mixed Doubles Qual	Mixed Doubles Qual	Mixed Doubles Qual	Mixed Doubles Qual	Mixed Doubles Qual
18:15	18:25	BUFFER BREAK					
18:25	18:55	Mixed Doubles Qual	Mixed Doubles Qual	Mixed Doubles Qual	Mixed Doubles Qual	Mixed Doubles Qual	Mixed Doubles Qual
18:55		END OF DAY 1					

### Day 2 - Indoor - 22 June - Teqball Tour - Grindsted 2024

Start	End	Table 1	Table 2	Table 3	Table 4	Table 5	Table 6
10:00	10:30	Men's Doubles Qual	Men's Doubles Qual	Men's Doubles Qual	Men's Doubles Qual	Men's Doubles Qual	Men's Doubles Qual
11:00	11:10	BUFFER BREAK					
11:10	11:40	Men's Doubles Qual	Men's Doubles Qual	Men's Doubles Qual	Men's Doubles Qual	Men's Doubles Qual	Men's Doubles Qual
11:40	11:50	BUFFER BREAK					
11:50	12:20	Men's Doubles Qual	Men's Doubles Qual	Men's Doubles Qual	Men's Doubles Qual	Men's Doubles Qual	Men's Doubles Qual
12:20	12:50	Women's Doubles Qual	Women's Doubles Qual	Women's Doubles Qual	Women's Doubles Qual	Women's Doubles Qual	Women's Doubles Qual
12:50	13:20	Women's Doubles Qual	Women's Doubles Qual	Women's Doubles Qual	Women's Doubles Qual	Women's Doubles Qual	Women's Doubles Qual
13:20	13:50	Women's Doubles Qual	Women's Doubles Qual	Women's Doubles Qual	Women's Doubles Qual		
13:50	14:50	LUNCH BREAK + MD DRAW					
14:50	15:25	Men's Doubles KO 16	Men's Doubles KO 16	Men's Doubles KO 16	Men's Doubles KO 16		
15:25	16:00	Men's Doubles KO 16	Men's Doubles KO 16	Men's Doubles KO 16	Men's Doubles KO 16		
16:00	16:35	Men's Singles QF	Men's Singles QF	Men's Singles QF	Men's Singles QF		
16:35	17:10	Women's Singles QF	Women's Singles QF	Women's Singles QF	Women's Singles QF		
17:10	17:45	Men's Doubles QF	Men's Doubles QF	Men's Doubles QF	Men's Doubles QF		
17:45	18:20	Mixed Doubles QF	Mixed Doubles QF	Mixed Doubles QF	Mixed Doubles QF		
18:20	18:55	BUFFER BREAK					
18:55	19:30	Men's Singles SF	Men's Singles SF	Women's Singles SF	Women's Singles SF		
19:30	19:45	BUFFER BREAK					
19:45	20:20	Men's Doubles SF	Men's Doubles SF	Women's Doubles SF	Women's Doubles SF		
20:20	20:35	BUFFER BREAK					
20:35	21:10	Mixed Doubles SF	Mixed Doubles SF				
21:10		END OF DAY 2					

### Day 3 - Indoor - 23 June - Teqball Tour - Grindsted 2024

Start	End	Table 1	Table 2	Table 3	Table 4	Table 5	Table 6
12:00	12:40	Women's Singles Final					
12:40	13:20	Men's Singles Final					
13:20	14:00	Women's Doubles Final					
14:00	14:40	Men's Doubles Final					
14:40	15:20	Mixed Doubles Final					
15:20		END OF DAY 3					

#TEQBALL

